



# KBT 8-Ports 2L2H Antenna

## KB65D0727Z8-17D18D-I-W

Electrical Specifications					
Frequency Range (MHz)		2 × 690-960 (R1, R2)			
		690-806	790-894	880-960	
Polarization		±45°			
Electrical Downtilt (°)		2-12, continuously adjustable			
Gain (dBi)	at mid tilt	16.1	16.8	17.0	
	Over all tilts	16.0±0.9	16.7±0.7	16.9±0.7	
Side lobe suppression for first side lobe above main beam (dB)		>16	>16	>16	
Horizontal 3dB Beam Width (°)		65±6.5	58±3.2	56±5.5	
Vertical 3dB Beam Width (°)		8.8±0.8	7.9±0.5	7.2±0.7	
Front to Back Ratio, ±30° (dB)		>23	>24	>25	
Cross-Polar Ratio, 0° (dB)		>17	>18	>17	
Frequency Range (MHz)		2 × 1695-2690 (Y1, Y2)			
		1695-1880	1920-2170	2300-2490	2490-2690
Polarization		±45°			
Electrical Downtilt (°)		2-12, continuously adjustable			
Gain (dBi)	at mid tilt	17.3	17.5	18.0	18.2
	Over all tilts	17.1±0.5	17.5±0.5	17.8±0.9	18.1±0.8
Side lobe suppression for first side lobe above main beam (dB)		>16	>16	>14	>15
Horizontal 3dB Beam Width (°)		69±6.5	61±6.5	60±7.5	58±7.0
Vertical 3dB Beam Width (°)		6.8±0.5	6.0±0.5	5.2±0.5	4.8±0.6
Front to Back Ratio, ±30° (dB)		>25	>25	>25	>26
Cross-Polar Ratio, 0° (dB)		>16	>17	>18	>17
VSWR		≤1.5			
Cross Polar Isolation (dB)		≥26			
Interband isolation (dB)		≥28			
Intermodulation IM3 (dBc)		≤ -153(2 x 43 dBm carrier)			
Max. power per port (W)		200			
Impedance (Ω)		50			
Grounding		DC Grounding			
Values based on NGMN recommendations on Base Station Antenna Standards V12.0(BASTA V12.0)					

Add: No.30 Dongyang 3rd Road, Danzao Town, Nanhai District, Foshan City, Guangdong, China 528216

Tel: +86-757-88022860

Email: kbt@kenbotong.com

Web: <http://www.kenbotong.com>

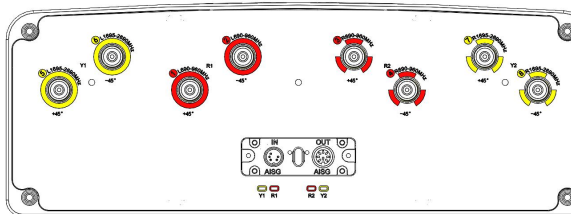


# KBT 8-Ports 2L2H Antenna

Mechanical Specifications	
RET type	Integrated RET (AISG2.0/3GPP)
AISG Connectors (1 in 1 out)	2x8 pin (in: Male; out: Female)
Connector	8x 4.3-10 Female, Bottom
Antenna dimensions (H x W x D) (mm)	2497 x 467 x167
Packing dimensions (H x W x D)(mm)	2697 x 542 x292
Antenna weight (kg)	35.5
Clamps weight (kg)	9
Diameter of installation pole (mm)	φ50- φ115
Radome material	Fiberglass
Radome color	Light grey
Operational temperature (°C)	-40 to +65
Wind load at 42m/s (N)	1080/ 475/ 1205 (Frontal/ Lateral/ Rearal)
Max. operational wind speed (km/h)	200

## Layout and Pattern

### Connector Position:



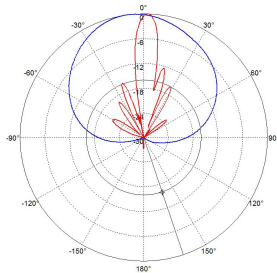
R1/R2: 690-960MHz;  
Y1/Y2: 1695-2690MHz;

### Configuration Types:

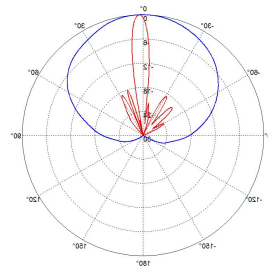


RET S/N:  
KBxxx-R1-xx.....;  
KBxxx-R2-xx.....;  
KBxxx-Y1-xx.....;  
KBxxx-Y2-xx.....;

### Pattern sample for reference:



R1/R2:690-960MHz



Y1/Y2:1695-2690MHz

Add: No.30 Dongyang 3rd Road, Danzao Town, Nanhai District, Foshan City, Guangdong, China 528216

Tel: +86-757-88022860

Email: [kbt@kenbotong.com](mailto:kbt@kenbotong.com)

Web: <http://www.kenbotong.com>